

PHASE I CONSTRUCTION OF NEW FIRE STATION No. 78  
**KITTITAS COUNTY FIRE DISTRICT #7**  
 16660 South Salmon La Sac Road, Ronald Washington

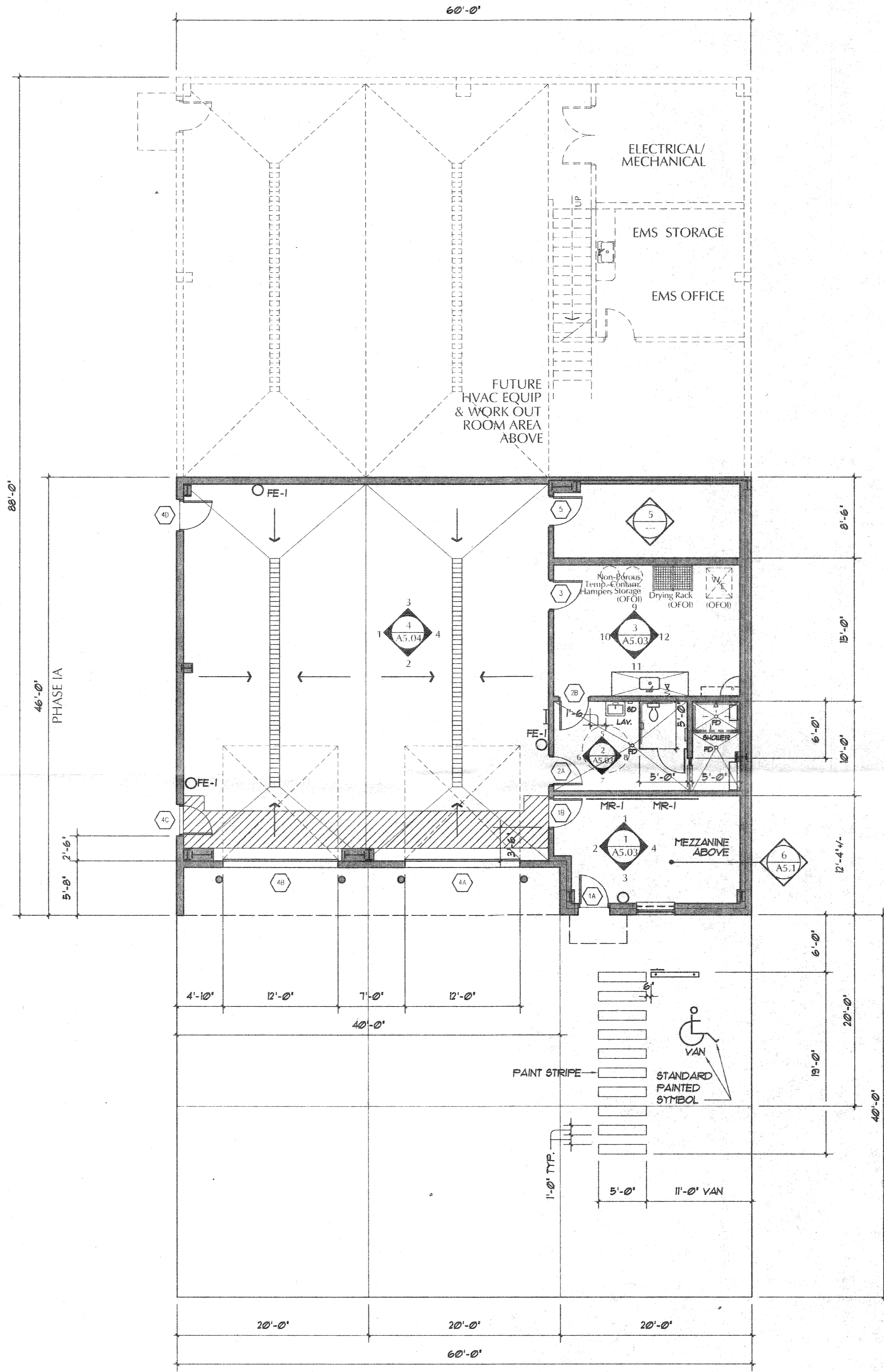
**The DOH Associates, PS**  
 ARCHITECTS and PLANNERS  
 7 N Wenatchee Ave Suite 500, Wenatchee, Washington 98801  
 Telephone (509) 662-4781 Facsimile (509) 663-3253

Revised Date: 09-08-10  
 Job: 0805.3 Date: 04-16-10  
 DWG ID - 000X000-

PHASE I FS #78  
**SITE DEVELOPMENT PLAN**  
 1" = 30' - 0"

RECEIVED  
 AUG 31 2010  
 KITTITAS COUNTY  
 CDS

**ISSUED**  
 AUG 30 2010  
 The DOH Assoc. by **A1.1**



PHASE I CONSTRUCTION OF NEW FIRE STATION No. 78  
**KITTITAS COUNTY FIRE DISTRICT #7**  
 16660 South Salmon La Sac Road, Ronald Washington

- ROOM SCHEDULE**
- 1 OFFICE/STORAGE ROOM
  - 2 RESTROOM
  - 3 DECONTAMINATION ROOM
  - 4 APPARATUS BAYS
  - 5 ELECTRICAL ROOM
  - 6 MEZZANINE MECHANICAL DRY STORAGE ROOM
- Total Phase IA - 2,540 gsf (semi-finished and finished space)

**The DOH Associates, PS**  
 ARCHITECTS and PLANNERS  
 7 N Wenatchee Ave Suite 500, Wenatchee, Washington 98801  
 Telephone (509) 662-4781 Facsimile (509) 663-3253

Revised Date: 08-08-10  
 Job: 0805.3 Date: 04-15-10  
 DWG ID - 000X000-

**FLOOR PLAN - PHASE I A INTERIM PLAN**  
 1/8" = 1'-0"